



# Website on Potato Tuber Blemishes

Karima Bouчек & Stuart Wale



## Supporting of the website

- **INRA- France:** Provision of the tool “eZ publish” & its maintenance
- **Webmaster** was funded by French Potato Organisation
- **The time spent by the experts:**  
GNIS/INRA (**K. Bouchek**) ; Potato Dynamics LTD (**S. Wale**);  
Germicopa (**C. Chatot**); FN3PT (**Y. Le Hingrat**);  
Arvalis ( **D. Gaucher**)



**Summary**

The history of the website & the context

Why set up a website and who is the target audience?

Its organisation, its content

How could we interact with users ?

Open discussion



## The history

- This story began at the 18<sup>th</sup> triennial conference in Oulu
- We held a workshop on the nomenclature and assessment of tuber blemishes
- A website was proposed and received general approval
- An outline was suggested of what might be included

**Potato Tuber  
Symptom  
Website**

**Proposed symptom name**

**Silver scurf**

Page 1

Latin name

*Helminthosporium solani*

Page 2

Other names

Index

Click on Photo to enlarge



**Diagnostic characters for visual diagnosis**

- Silvery lesions with well defined edge
- Edge of lesion brown colour and of different widths
- Lesions may coalesce to form larger area
- Conidiophores develop at edge of lesion

**Notes on confirmatory diagnostics**

- PDA is good isolation medium
- Pick tissue from edge of lesion after surface sterilisation

Key reference: Errampalli, D; Saunders, J M; Holley, J D (2001) Plant Pathology, **50**, 141-153

**Possible confusing symptoms — click on photo to go to relevant symptom page**



**Bulletin Board**

Click here to  
add  
comments



- Why set up a web site?

## Diagnosis

Complex

Several blemishes =  
uncertain causes

## Nomenclature

Variable  
denominations

The same blemish =  
a range of names



## Issues establishing the website

- objectives
- different sections and subsections
- content and the organisation
- **What diseases/disorders to be include in “blemishes”?**

These issues were discussed by our group of expert who provided texts and photos

## Target audience?

### Researchers

- Share knowledge and data
- Validate the content

### Field specialists

- Agronomists, Crop Protection specialists, Fieldsmen

### Technical staff

- Use the new validated data
- Info about new symptoms

### Quality control labs

- Feedback to growers on quality issues for fresh or processing

### Other users

- Students, Teachers, Growers



The objectives of the website are to:

1

- Classify blemishes by their appearance
- Relate them to their possible causes
- List other blemishes with which it may be confused

2

- Establish a mechanism of exchange

## Opening date

- The website was launched on July 4 -2014
- [www/potato-tuber-blemishes.com](http://www/potato-tuber-blemishes.com)

- Its content and its organisation

[Website](#)

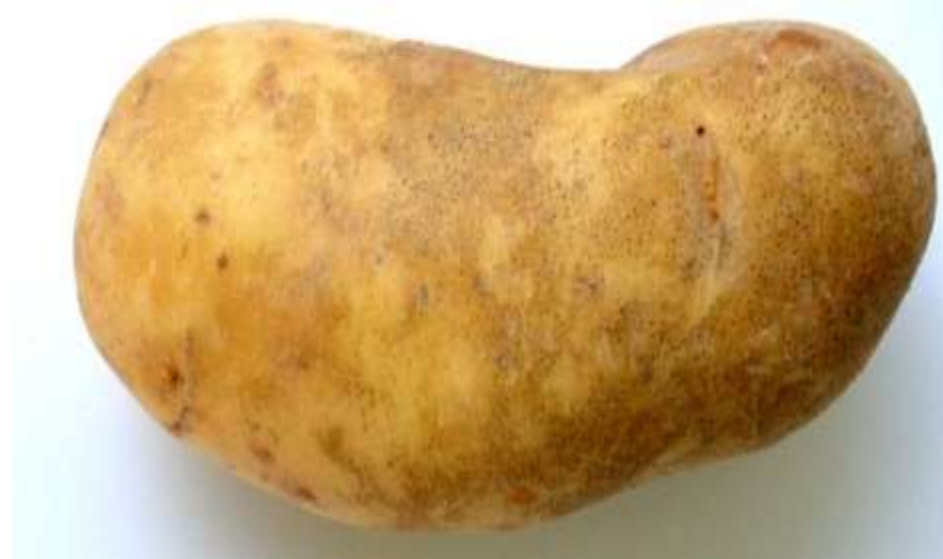
# DISCOLORATIONS



*Golding Blotch*



Non identified cause



*Colletotrichum coccodes*  
**Black dot**

- Its content and its organisation

[Website](#)

# CORKY BLEMISHES



© K. Bouček-Méchiche (GNIS/INRA)

*Rhizoctonia solani*  
**Rhizoctonia corky symptoms**

*Streptomyces reticuliscabiei*

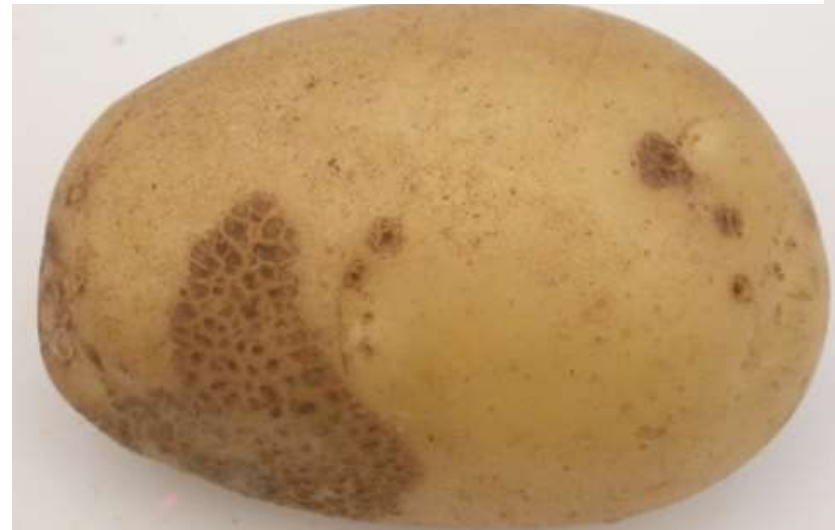
**Netted scab**



© 1994

**Rhizocab**

*R. solani* or *Streptomyces* ?





- Its content and its organisation

[Website](#)

# PITTED OR RAISED BLEMISHES

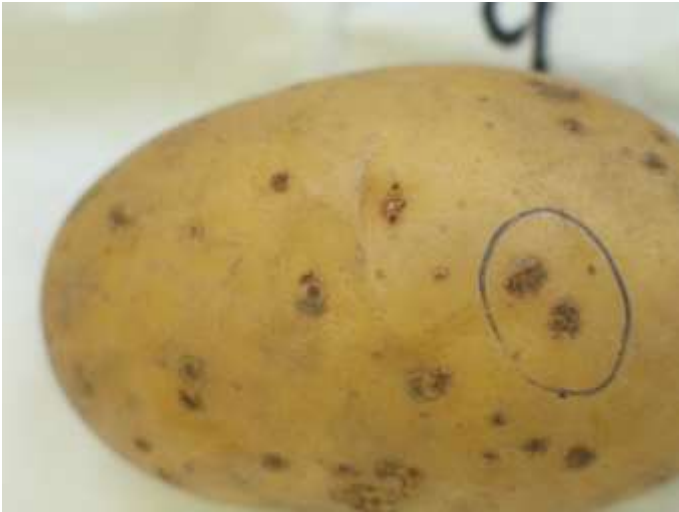


*Globodera* spp.  
**Potato cyst nematodes**

*Polyscytalum pustulans*  
**Skin spot**



*Streptomyces* spp.  
**Common scab**



- Its content and its organisation

[Website](#)

# PITTED OR RAISED BLEMISHES



*Rhizoctonia solani*  
**Dry Core**



- Its content and its organisation

[Website](#)

# Cracks & Deformations



**Physiological cracking**  
**Water stress**

**Rhizoctonia cracking**







- Interaction with website users ?

Comments and photos sent for inclusion

Group of experts peer review comments and photos

Comments and photos published



Open discussion: We need your feedback!

What is your opinion on  
the website? :

Its  
organisation

The content

The mechanism  
of interaction

## How could the website evolve?

- Continue to restrict to tuber blemishes
- Expand to include:
  - Internal tuber symptoms
- Develop information presented in more depth

## Constitution of the expert panel

- Do you know of someone who might be appropriate for the expert panel?



## Potato tuber blemishes

### *Understanding & diagnosis*

How should the website be publicised?



# Potato tuber blemishes

*Understanding & diagnosis*



**Thank you !**